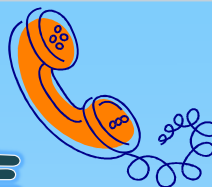


# 晴心線



晴心線是一項嶄新的

電話支援及輔導服務，目的是為長期處於孤獨無助的華人長者及其照顧者提供社交及情緒支援。活動包括：

## 松柏俱樂部

這是一個社交小天地，每週一次透過家用電話線以電話會議形式組成“電話聊天小組”讓組員彼此交流、傾談、並了解社區最近動向，使他們沉悶孤單的生活變得開心有趣。

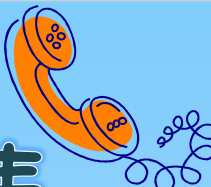
## 無憂谷

是一個透過電話提供個人或小組形式的情緒支援及輔導服務，由專業輔導工作員協助受情緒困擾、患有憂慮、抑鬱症的長者或照顧者改善負面情緒。

有關以上服務的電話費會由政府支付。有興趣者可透過機構、家人、朋友轉介或自行報名，工作人員會聯絡報名者並安排服務評估。

**查詢：03 9898 1965**

# 晴心線



晴心線是一項嶄新的

電話支援及輔導服務，目的是為長期處於孤獨無助的華人長者及其照顧者提供社交及情緒支援。活動包括：

## 松柏俱樂部

這是一個社交小天地，每週一次透過家用電話線以電話會議形式組成“電話聊天小組”讓組員彼此交流、傾談、並了解社區最近動向，使他們沉悶孤單的生活變得開心有趣。

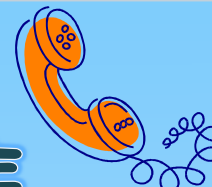
## 無憂谷

是一個透過電話提供個人或小組形式的情緒支援及輔導服務，由專業輔導工作員協助受情緒困擾、患有憂慮、抑鬱症的長者或照顧者改善負面情緒。

有關以上服務的電話費會由政府支付。有興趣者可透過機構、家人、朋友轉介或自行報名，工作人員會聯絡報名者並安排服務評估。

**查詢：03 9898 1965**

# 晴心線



晴心線是一項嶄新的

電話支援及輔導服務，目的是為長期處於孤獨無助的華人長者及其照顧者提供社交及情緒支援。活動包括：

## 松柏俱樂部

這是一個社交小天地，每週一次透過家用電話線以電話會議形式組成“電話聊天小組”讓組員彼此交流、傾談、並了解社區最近動向，使他們沉悶孤單的生活變得開心有趣。

## 無憂谷

是一個透過電話提供個人或小組形式的情緒支援及輔導服務，由專業輔導工作員協助受情緒困擾、患有憂慮、抑鬱症的長者或照顧者改善負面情緒。

有關以上服務的電話費會由政府支付。有興趣者可透過機構、家人、朋友轉介或自行報名，工作人員會聯絡報名者並安排服務評估。

**查詢：03 9898 1965**

# Joyful Line



Joyful Line is a new tele-support and counseling service that aims to help homebound frail Chinese seniors and carers who experience social isolation to gain social connection and emotional support.

## Evergreen Club

This is a social tele-support group which is conducted once a week. Members can interact through telephone conferencing in their own home. Through this service, members can develop peer support and friendship within their group, know the recent community news, develop new areas of interest and bring joy & satisfaction to their routine lives towards ageing.

## Happy Valley

This is a phone counselling service, through this, older people and their carer who face emotional problems such as depression, anxiety and worries can talk to professional counsellor to improve their mental wellbeing.

The service is free includes the phone call charges.  
Interested parties can register on  
**03 9898 1965**

Staff will contact participants to assess their eligibility for the above service.



# Joyful Line



Joyful Line is a new tele-support and counseling service that aims to help homebound frail Chinese seniors and carers who experience social isolation to gain social connection and emotional support.

## Evergreen Club

This is a social tele-support group which is conducted once a week. Members can interact through telephone conferencing in their own home. Through this service, members can develop peer support and friendship within their group, know the recent community news, develop new areas of interest and bring joy & satisfaction to their routine lives towards ageing.

## Happy Valley

This is a phone counselling service, through this, older people and their carer who face emotional problems such as depression, anxiety and worries can talk to professional counsellor to improve their mental wellbeing.

The service is free includes the phone call charges.  
Interested parties can register on  
**03 9898 1965**

Staff will contact participants to assess their eligibility for the above service.



# Joyful Line



Joyful Line is a new tele-support and counseling service that aims to help homebound frail Chinese seniors and carers who experience social isolation to gain social connection and emotional support.

## Evergreen Club

This is a social tele-support group which is conducted once a week. Members can interact through telephone conferencing in their own home. Through this service, members can develop peer support and friendship within their group, know the recent community news, develop new areas of interest and bring joy & satisfaction to their routine lives towards ageing.

## Happy Valley

This is a phone counselling service, through this, older people and their carer who face emotional problems such as depression, anxiety and worries can talk to professional counsellor to improve their mental wellbeing.

The service is free includes the phone call charges.  
Interested parties can register on  
**03 9898 1965**

Staff will contact participants to assess their eligibility for the above service.

